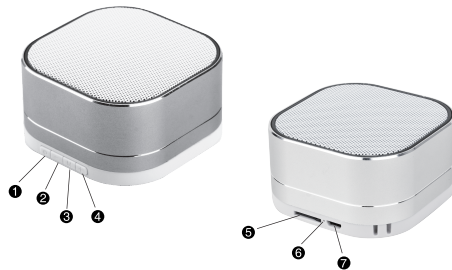


Function Keys



1. ON / OFF
2. Vol- / Previous Song
3. Mode Switch / FM Radio / Play / Pause
4. Vol+ / Next Song
5. TF Card Slot
6. Mic
7. USB Charging Port

1. ON/OFF

Press left power button to power on. Audio start up noise and blue light will come on and rapidly flash while looking for Bluetooth connection. Press and hold left power button to power off.

2. Bluetooth Connection

Follow the operating instructions of your Bluetooth device for pairing with the speaker. Typically this is done by going to the "Bluetooth", "Set Up" or "Connect" menu and selecting the option to search for Bluetooth devices.

When pairing, the blue light will blink rapidly; use smartphone or computer to search name "XMUSIC", click to connect and blue light should change to solid blue once connection is successful. Blue light will blink rapidly when device is out of range.

3. Playing Music

1. Press "M" button to pause music or answer a call. A second press of "M" button will resume music.
2. Press Volume "-" once to play previous song.
3. Press Volume "+" once to play next song.

4. Press and hold Volume "-" to reduce speaker volume. A sound will notate lowest volume.

5. Press and hold Volume "+" to increase speaker volume. A sound will notate highest level.

4. Hands free phone call operation

1. With incoming phone calls, the blue light on speaker will blink until the call is either answered or ignored. Answer call by pressing "M" button. Ignore call by pressing and holding "M" button.

2. When on an active call, press "M" to hang up.

3. Hold and press "M" to redial last call when speaker is on standby mode.

4. Answered calls will automatically sound from speaker. Speaker also has microphone to hear speaking.

5. To switch to phone while on active call, press and hold "M" button for 1 second. Press and hold "M" button while on active call to switch back to speaker as well.

5. Mode Switch (Bluetooth – Micro SD Card – AUX – FM)

When speaker is on with Micro SD card inserted, click "M" button to switch through different modes one by one in this order: Bluetooth – Micro SD – FM radio – AUX – Bluetooth.

(FM Radio: Connect the included USB cable to be FM Antenna, press and hold "M" button to auto tune and search for stations. Blue light will blink until auto search is complete.)

6. Charging

Connect the USB charging cable to the speaker's Micro USB port, insert USB end into the USB port of a 5V charger. A red light illuminates while charging and turns off when fully charged.

7. Restore to Factory Settings

In Bluetooth mode, press and hold "M" button for at least 3 seconds, the blue light will blink rapidly, restoring the speaker to factory settings.

ATTENTION

1. To avoid damage to your hearing and also preserve battery life of speaker, do not listen to music for long periods at a very high volume.
2. When any fault or glitch occurs in speaker, turn off immediately and unplug from charging (if plugged in) to prevent speaker and other components from damage.
3. Low battery life will affect Bluetooth distance range. Keep charged.

USER MANUAL



Packaging includes:

1. Portable Speaker
2. USB Line (FM Antenna)
3. Wrist Lanyard
4. User Manual

Features:

Active Suspension Lighting Effect
Minimal Art Aluminum Anode
Captivating sound. Glowing design
Designed for modern life



Powerful Sound



Micro SD Card

CNC

CNC Technology

Features:



Hands Free



LED Light



Wireless Transmission

Features:

Bluetooth Version: V5.0
Output Power : 3W
Discharge Current: 5V/0.5A
Battery: 400mAh 3.7V
Charging Current: 200mA
Product Size: 76 x 76x 40mm
Speaker Weight: 148g
Music Play Time: <=4 HOURS
Talk Time: Up to 4.5 hours
Standby time: Up to 20 hours
Speaker Output Frequency range: 150Hz - 20KHz